



4 Storage Building Lots

AMENDMENT #1

WAUPACA STORAGE CONDOMINIUMS

E & ME DEVELOPMENT LLC
03 02 71 31 00

N 2490
HWY 22

- UNIT 1
- UNIT 2
- UNIT 3
- UNIT 4
- UNIT 5
- UNIT 6
- UNIT 7
- UNIT 8
- UNIT 9
- UNIT 10
- UNIT 11
- UNIT 12
- UNIT 13
- UNIT 14
- UNIT 15
- UNIT 16
- UNIT 17
- UNIT 18
- UNIT 19
- UNIT 20
- UNIT 21
- UNIT 22
- UNIT 23
- UNIT 24
- UNIT 25
- UNIT 26
- UNIT 27

03 02 71 31
CWH LAND LLC

E 2002
POLLY RD
183.15'
C SM 28-137

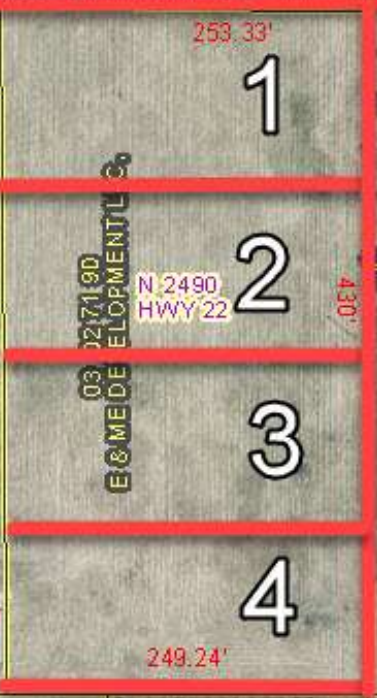
03 02 11 17

Hwy 22

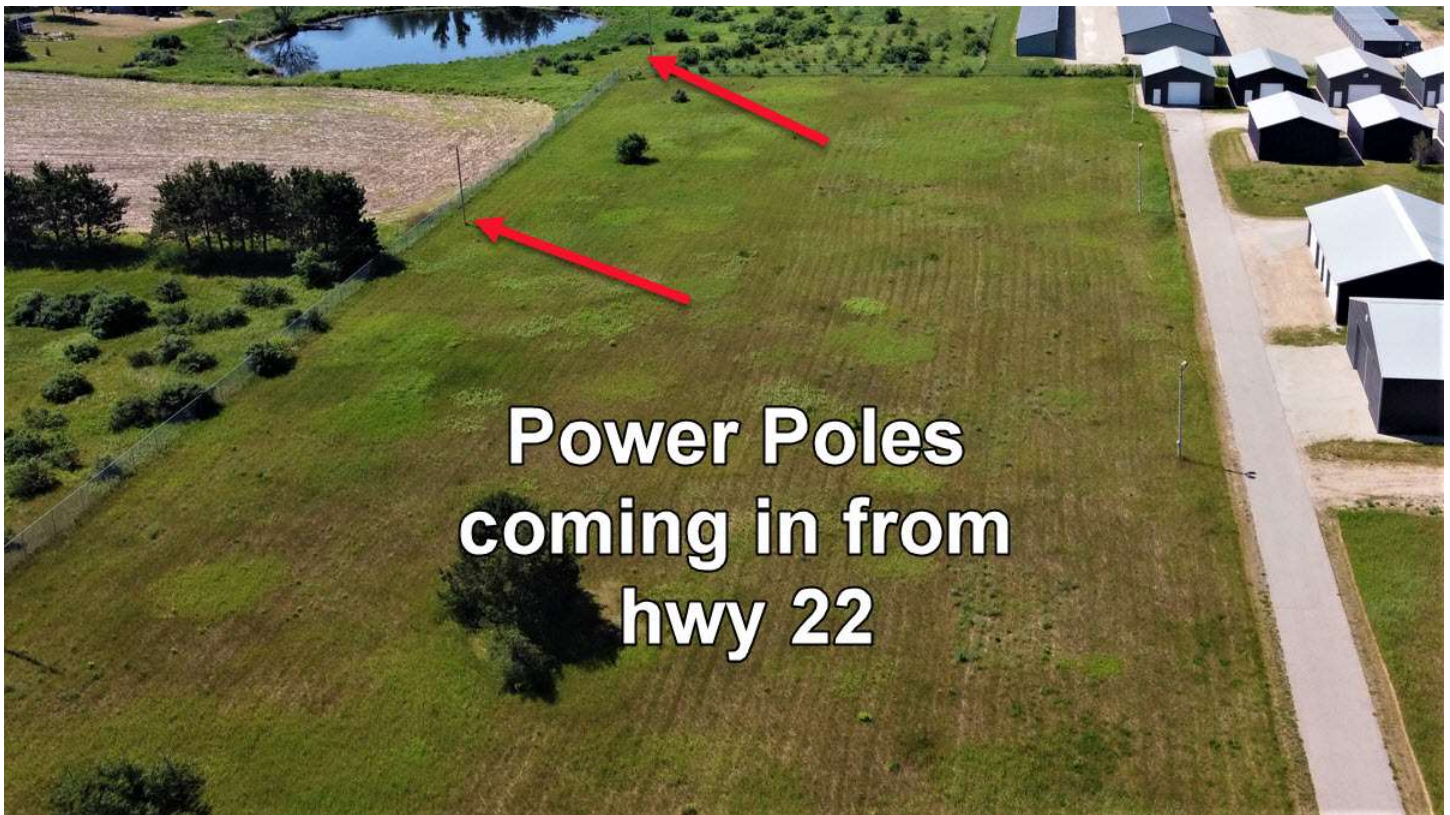
Paved Driveway

AMENDMENT #1

WAUPACA STORAGE CONDOMINIUMS



E 2002 POLLY RD 183.15' CSM 28-137 LT 2 179.50' LT 3 177.00' LT 4



Hwy 22, just south of the Waupaca High School –
4 level pole building lots being split from a larger parcel.

Close to Waupaca and the Waupaca Chain O' Lakes.

Prior to survey, lot size will be about 102' wide by 253' deep.

These are not condo parcels like next door.

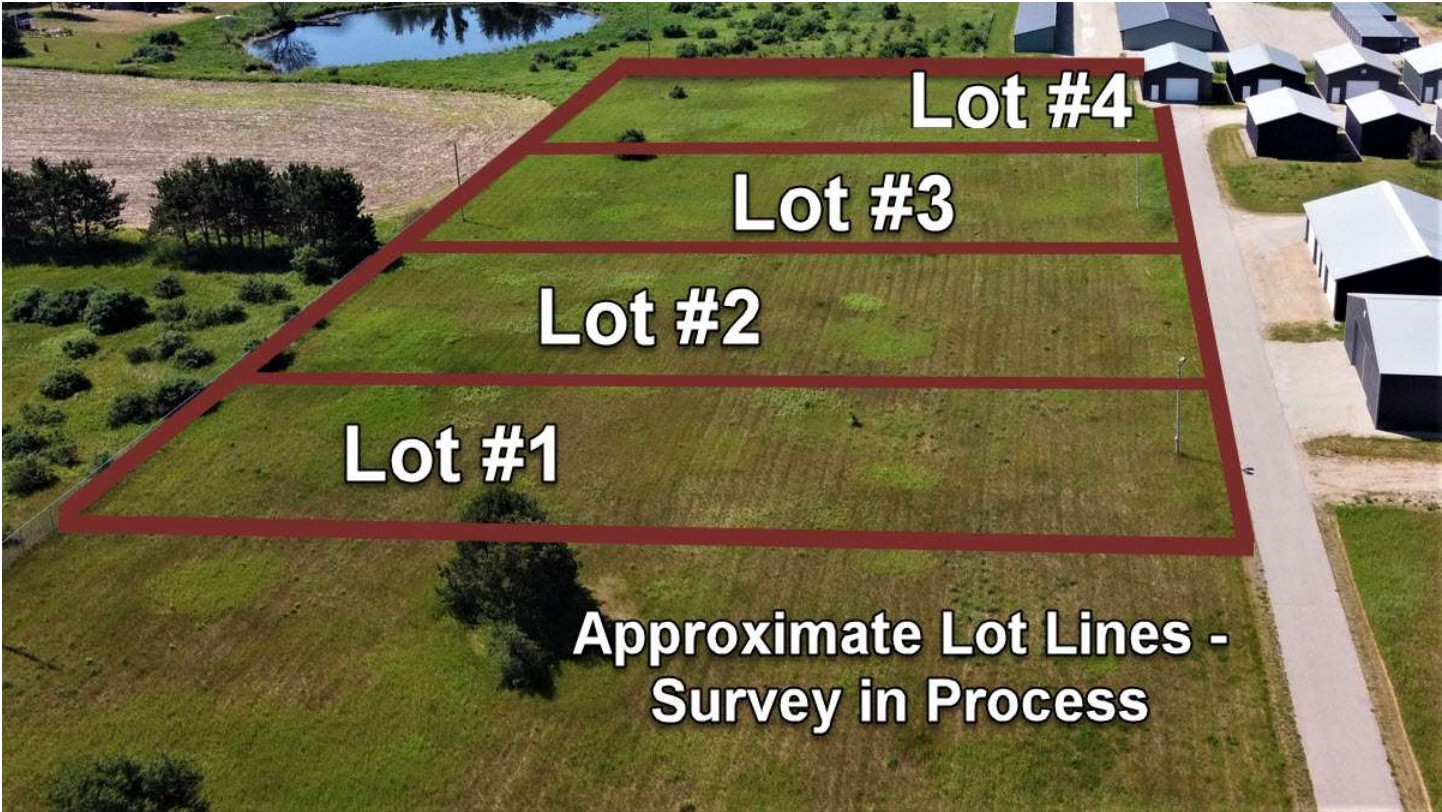
Each lot will be individually owned.

Paved driveway to each lot.

Fenced and gated at hwy 22.

Electric runs down North lot line. Survey and subdivision in process.

Call Steve Huhta Remax Lyons Real Estate for more info 920-889-9989
Steve@Huhta.com



Lot #4

Lot #3

Lot #2

Lot #1

**Approximate Lot Lines -
Survey in Process**

E54201 CONDOMINIUMS

→ 253.33'

Each Lot 249'
to 253 deep
 $430' / 4 = \text{about}$
107' wide

↓ 430'

N 2490
HWY 22
03 02 71 90

18
JETAL
21
ERYM
23
ERYM

UNIT
14

UNIT
15

288'
DUF

UNIT
27

→ 249.24'

79.50'

177.00'